



despecto
KNOWLEDGE CENTRE

N O I D A



ABOUT KNOWLEDGE CENTRE NOIDA PROJECT

New Modern Buildwell Pvt Ltd (NMBPL) is a leading real estate developer specializing in Residential, Commercial, and mixed-use properties with modern, tech-driven, and eco-friendly facilities.

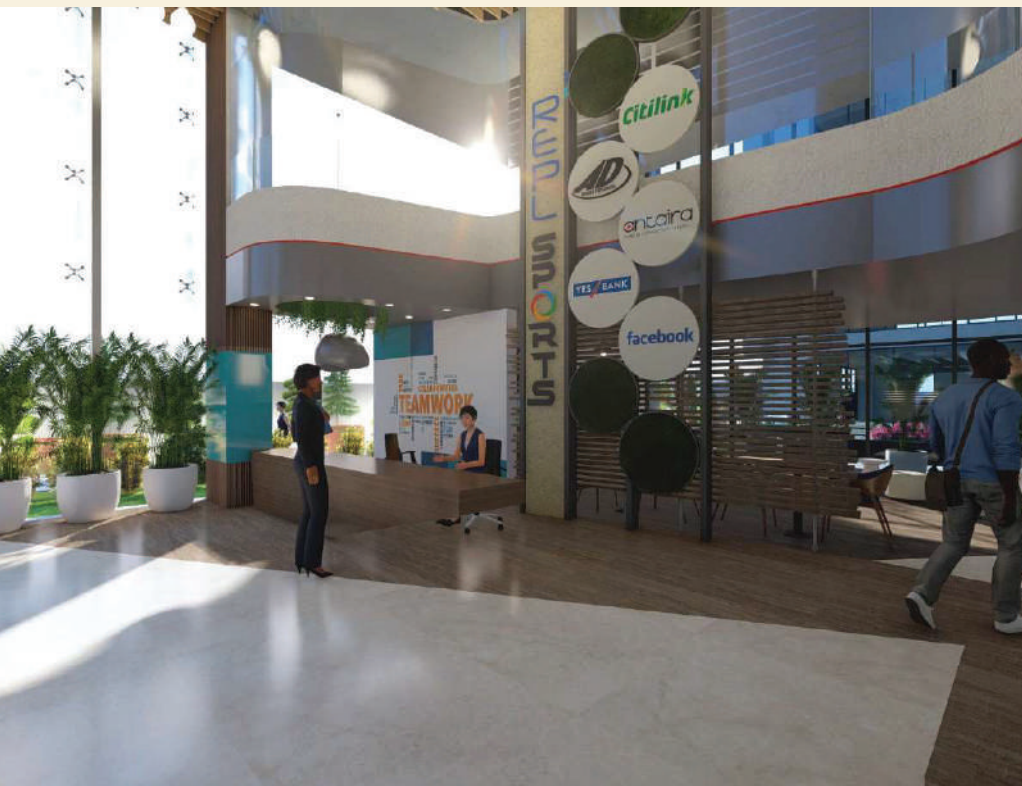
NMBPL is developing the Despecto Knowledge Centre, a Ground + 4 office complex on a 3,000 sqm land parcel in Sector-126, Noida (Opposite Gate No. 2, Amity University), with each floor spanning approx. 10,000 sq. ft.





Ideal for multi- user Office

- The Complex is well connected with important hubs of Noida and South Delhi like Botanical Garden and Okhla.
- Prime road presence & visibility
- Large plate office with landscaped plaza. Independent offices upto 10,000 sft area
- Generous natural light & views from all usable spaces.
- Fully automated building which gives hassle free access to its occupants
- Ample car parking in two level basement. Space for electric Car charging in basement
- Ideal Location for Offices Space, Restaurant & Cafe, Gym



PROJECT HIGHLIGHTS



LARGE PLATE OFFICE
WITH LANDSCAPED PLAZA



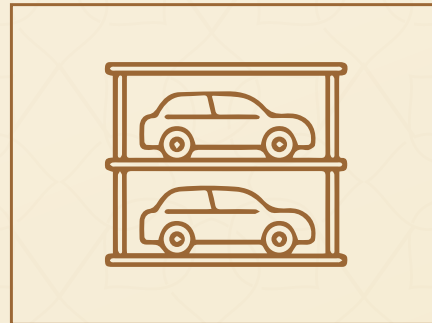
INDEPENDENT OFFICES
UPTO 10,000 SQ.FT AREA



GENEROUS NATURAL
LIGHT & VIEWS FROM
ALL USABLE SPACES



FULLY AUTOMATED
BUILDING



AMPLE CAR PARKING
IN TWO LEVEL BASEMENT

LOCATION ADVANTAGES

"WITHIN 5 KM OF NOIDA'S TOP CORPORATE HUBS, SCHOOLS, SHOPPING, AND HOSPITALS."



OPPOSITE TO GATE NO. 2
AMITY UNIVERSITY



SOUTH DELHI 10 MINS DRIVE



JEWAR AIRPORT 35 MINS DRIVE

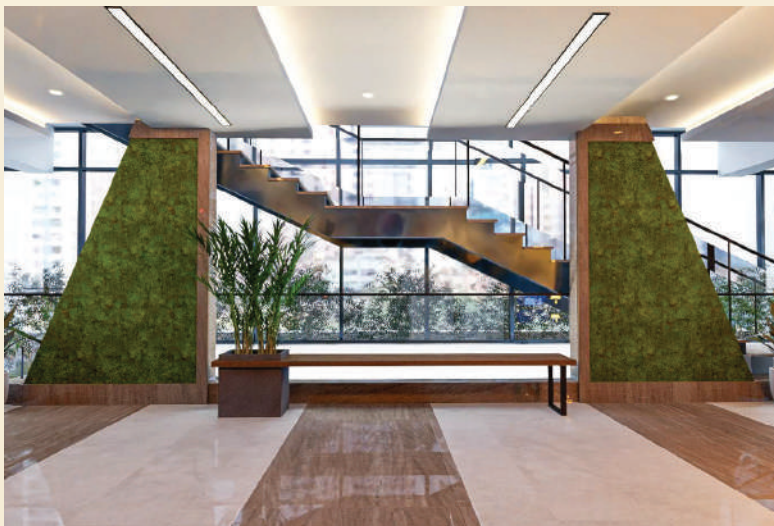


JUST 5 MIN DRIVE FROM
MAHAMAYA FLYOVER

EXPERIENCE ELEGANCE FROM THE MOMENT YOU STEP IN



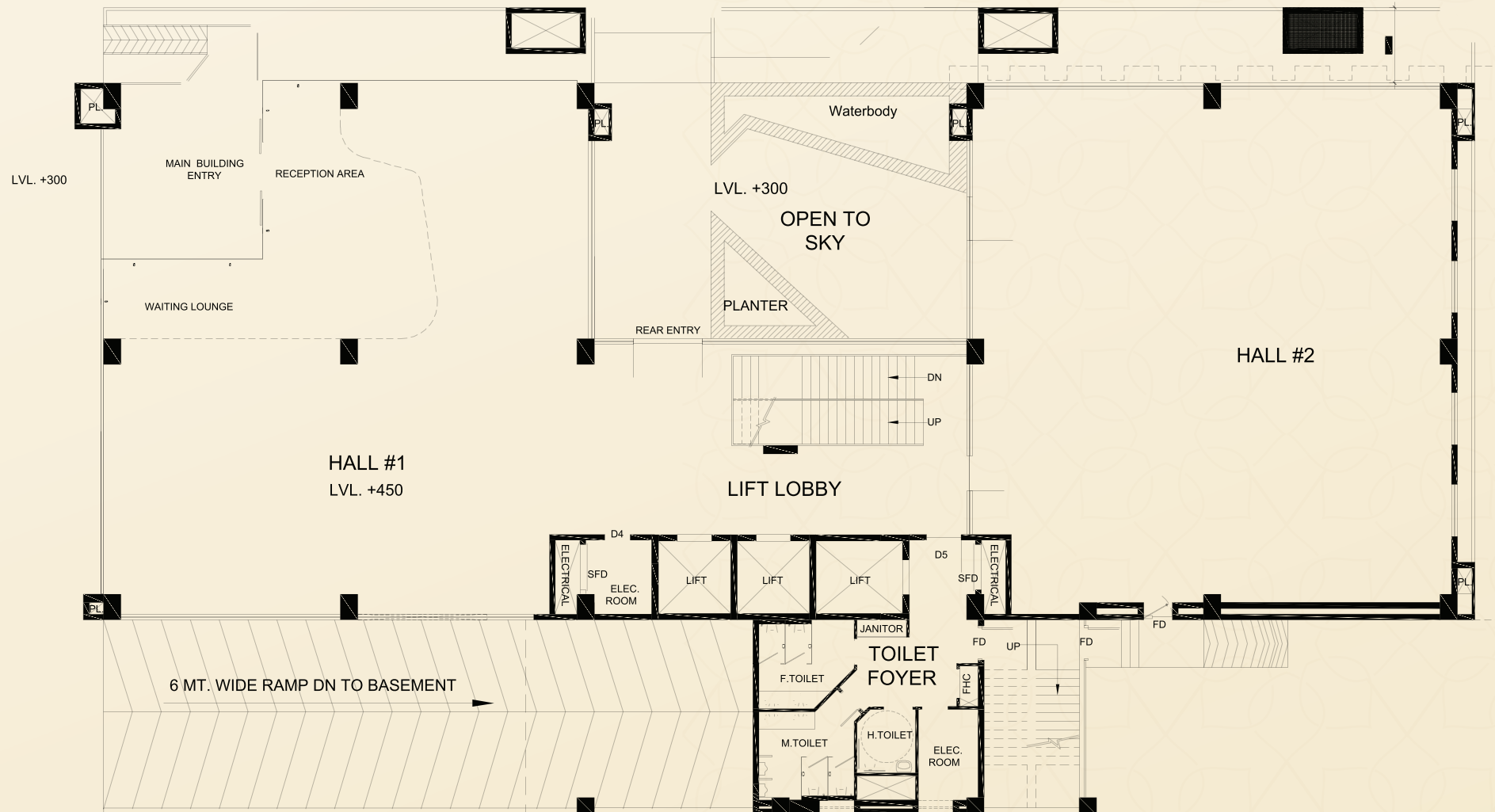
ELEVATING EVERY ARRIVAL WITH STYLE & SOPHISTICATION



THE CAFETERIA AND COFFEE SHOP FLOOR PLAN

The cafeteria and coffee shop are crafted to be more than just dining spaces—they are hubs of connection and relaxation. Designed with a seamless blend of functionality and modern aesthetics, the layout offers versatile seating arrangements, from communal tables for collaboration to cozy corners for quiet moments.

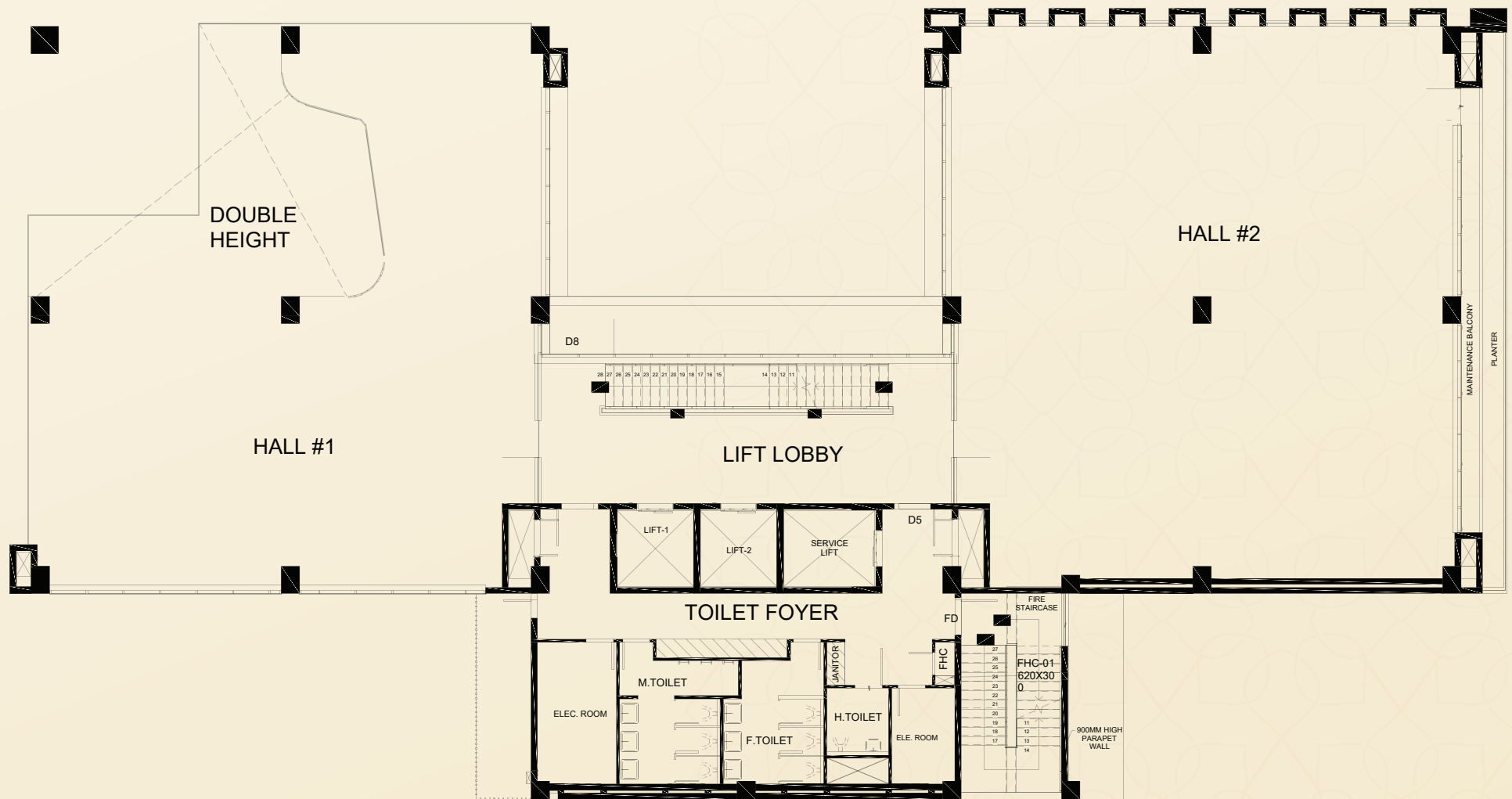
GROUND FLOOR PLAN



RESTAURANT AND GYM FLOOR PLAN

We offer restaurant and gym spaces on lease in a premium commercial building with excellent visibility and high footfall potential. Ideal for dining and fitness ventures, these spaces provide a fantastic opportunity to grow your business in a thriving market.

FIRST FLOOR PLAN

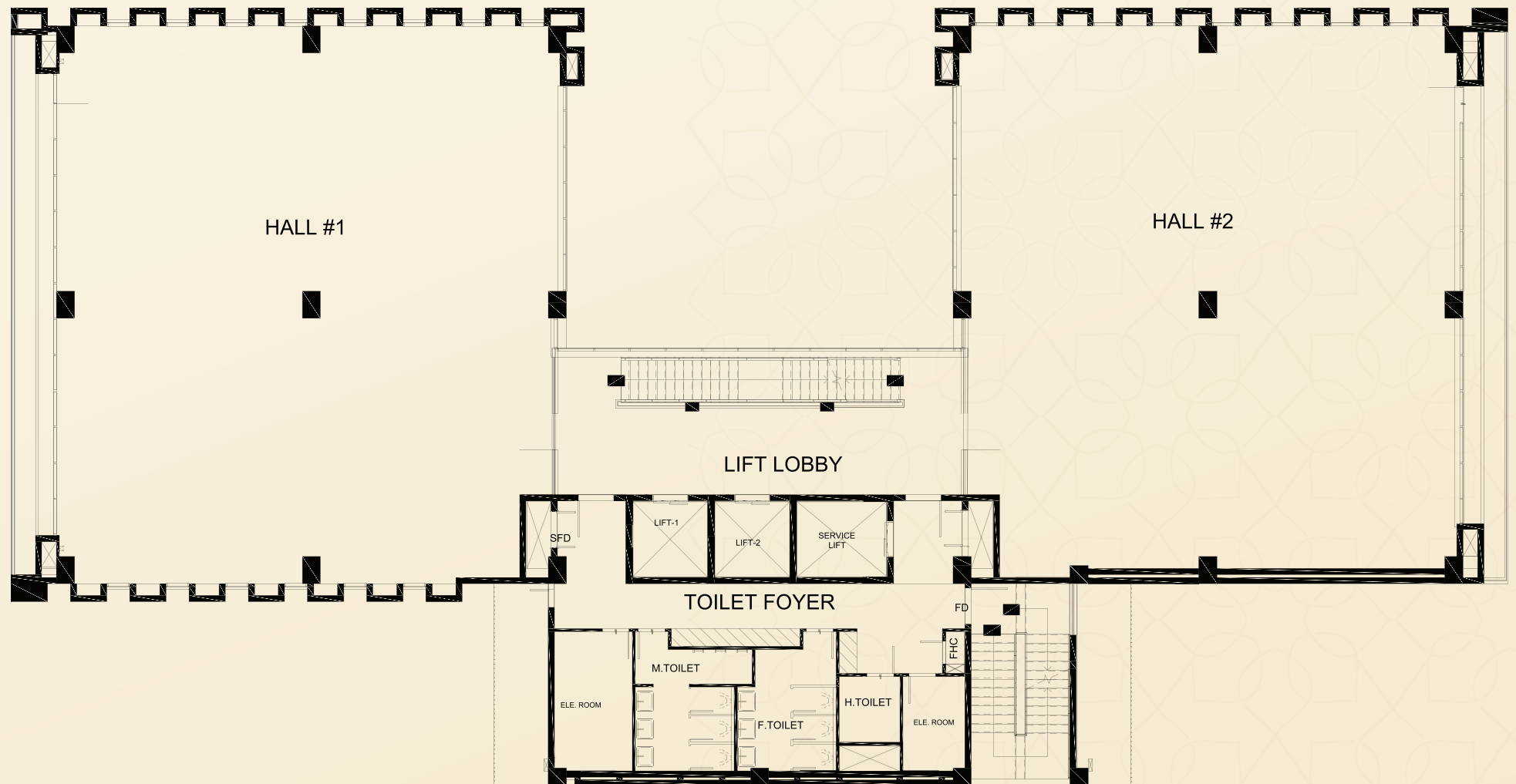


OFFICE SPACES

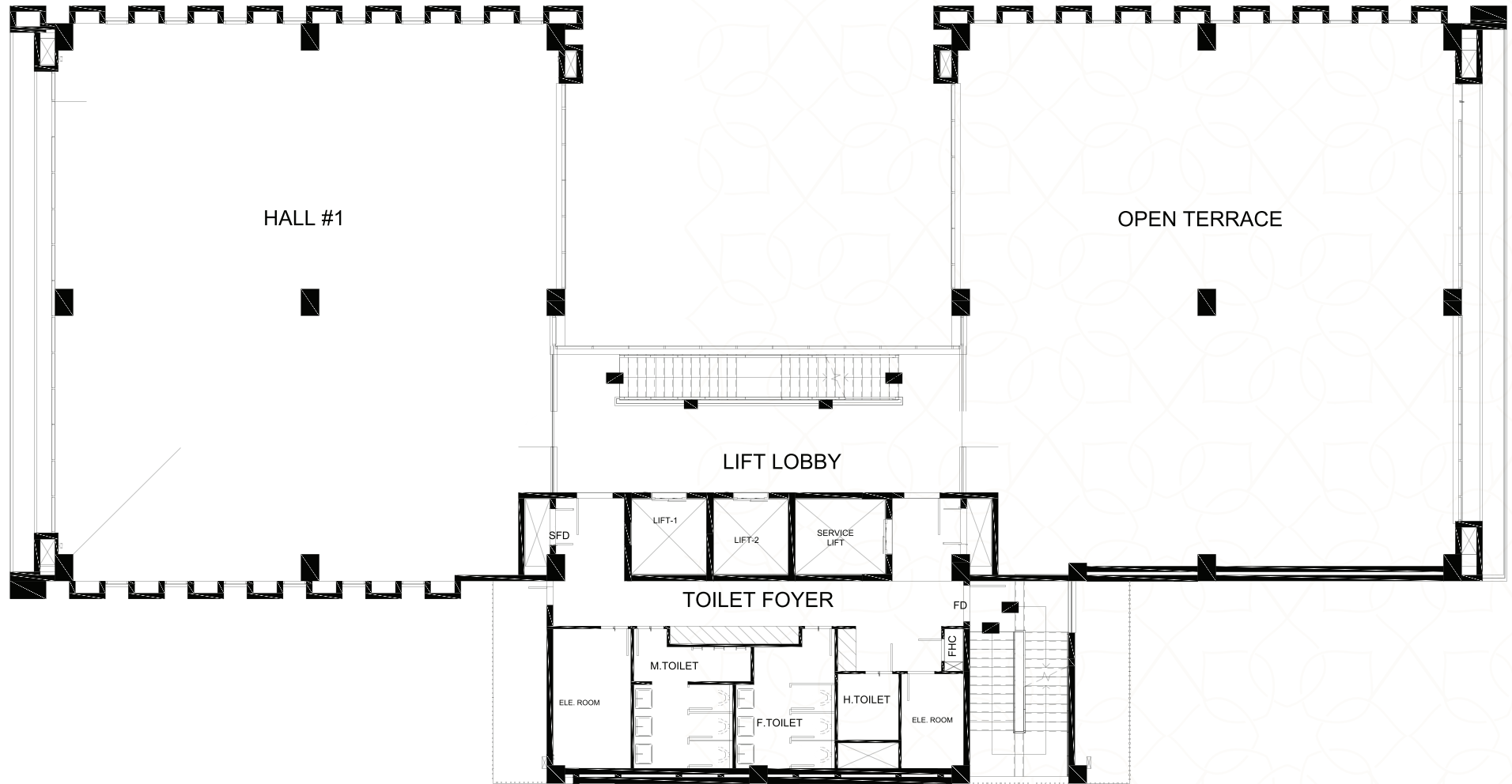
FLOOR PLAN

The office spaces are designed to inspire productivity and innovation. With modern layouts, ergonomic designs, and cutting-edge infrastructure, these spaces offer a seamless blend of functionality and aesthetics. Whether for focused work, collaborative meetings, or creative brainstorming, every detail is crafted to foster a professional yet comfortable environment, setting the stage for success and growth

SECOND - THIRD FLOOR PLAN

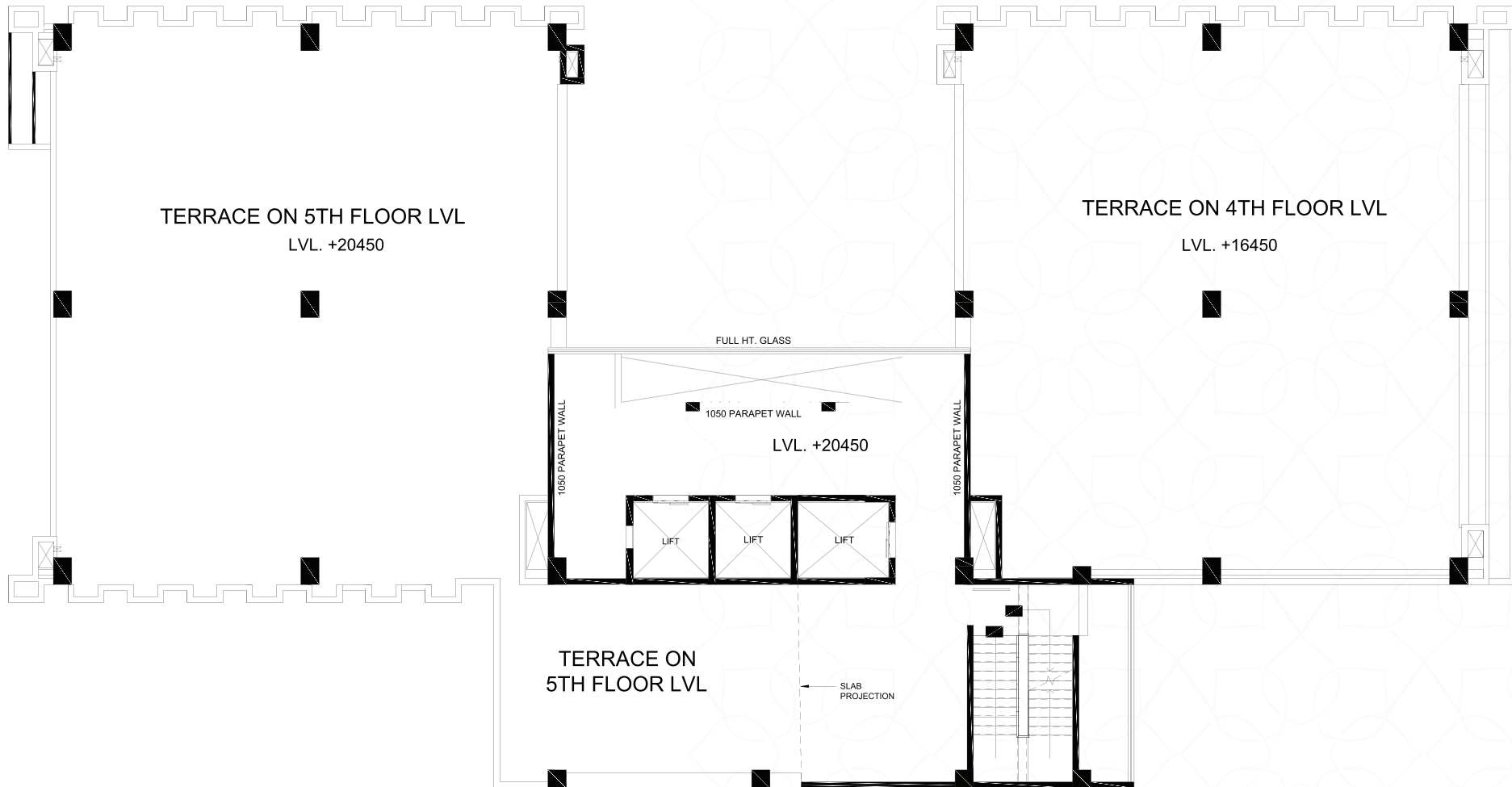


FLOOR PLAN



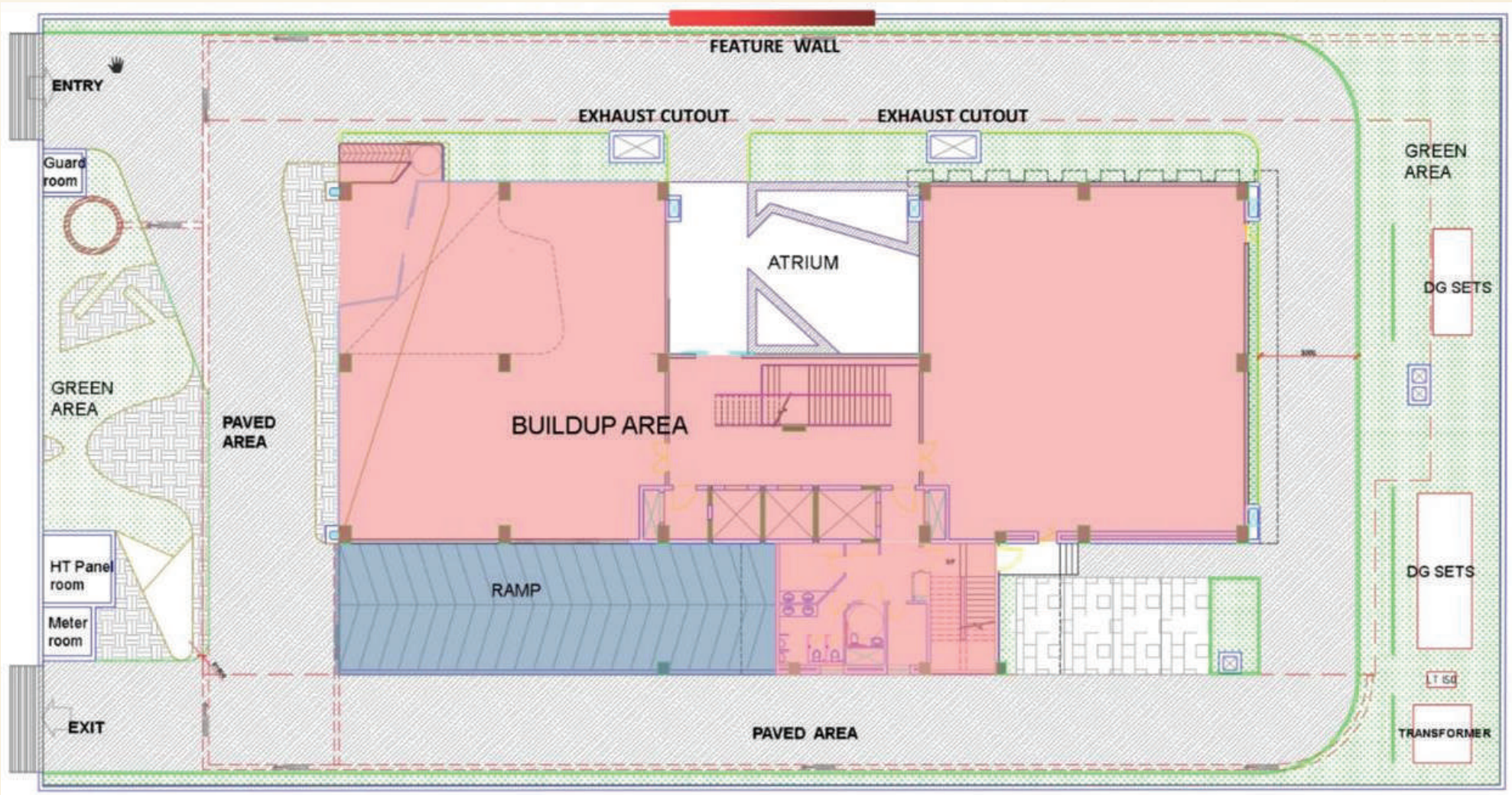
FOURTH FLOOR PLAN

FLOOR PLAN



MUMTY PLAN

MASTER PLAN





CALL : 9999991448 | 8929000898 | www.newmodern.in

Reg office:819, Antriksh Bhawan, K. G. Marg New Delhi – 110001

Site Address: Plot No. 12, Sector-126, NOIDA (Opposite to Gate No. 2 Amity University) - 201303.

Disclaimer: The views shown in the brochure may vary in accordance with the final approved map and does not guarantee the same. All intending purchaser/s are bound to inspect all plans and approvals and visit project sites and apprise themselves of all plans and approvals and other relevant information and nothing in this brochure is intended to substitute to the intending purchaser the actual plans and approvals obtained from time to time. This brochure is merely conceptual and is not a legal document. It cannot be treated as a part of the Annexure of final agreement/S that may be executed from time to time. The Developer reserves the right to change, amend, modify the contents of the brochure and architectural specifications during development stages. Finishing material might vary in project due to availability of material during the period of construction but specifications would remain same. Allottee(s) has to accept such variation(S). The Developer/Management holds no responsibility for its accuracy and shall not be liable to any intending purchaser or any one for the changes/ alterations/ improvements so made.